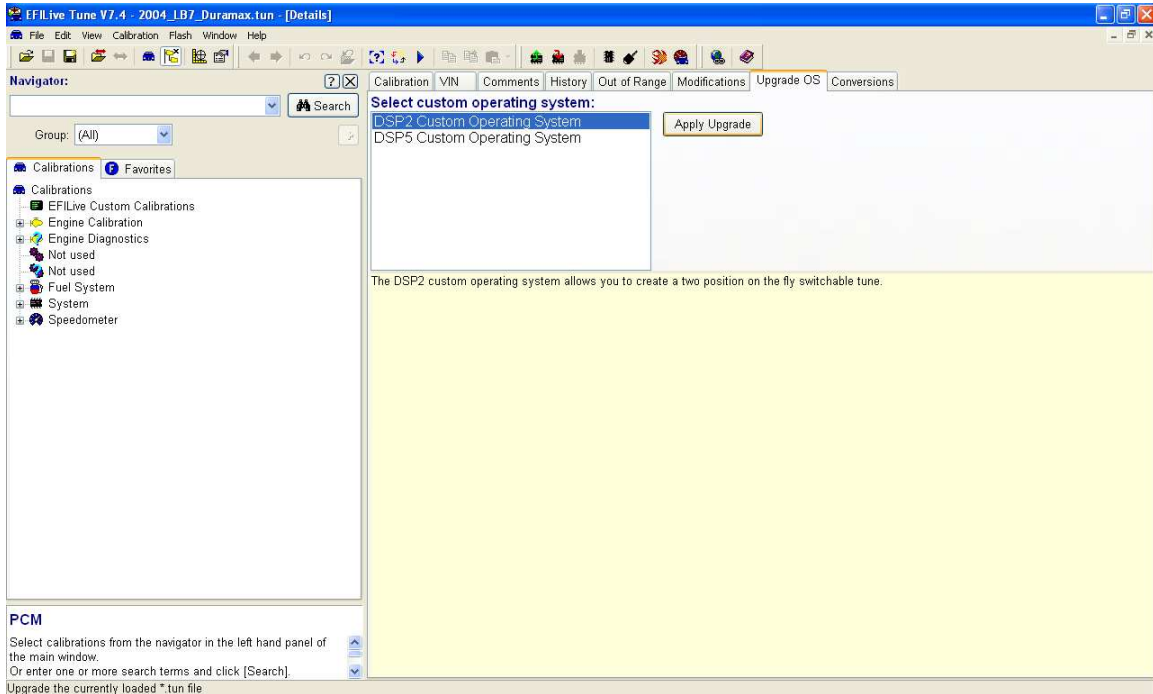
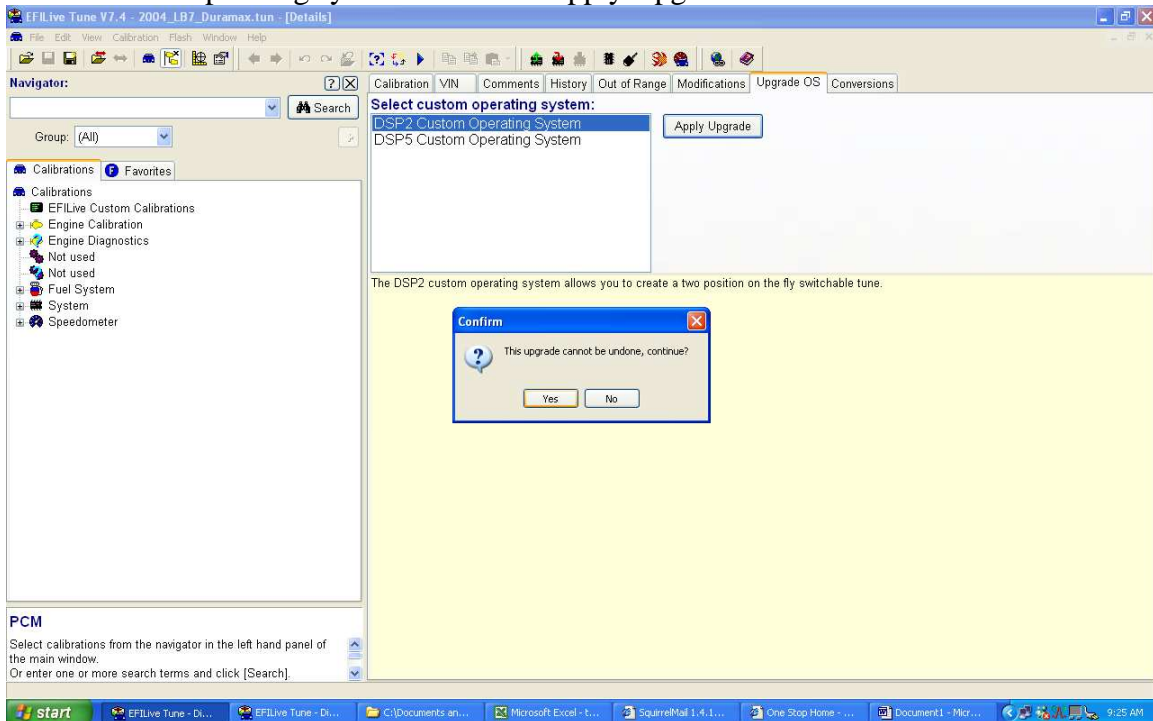


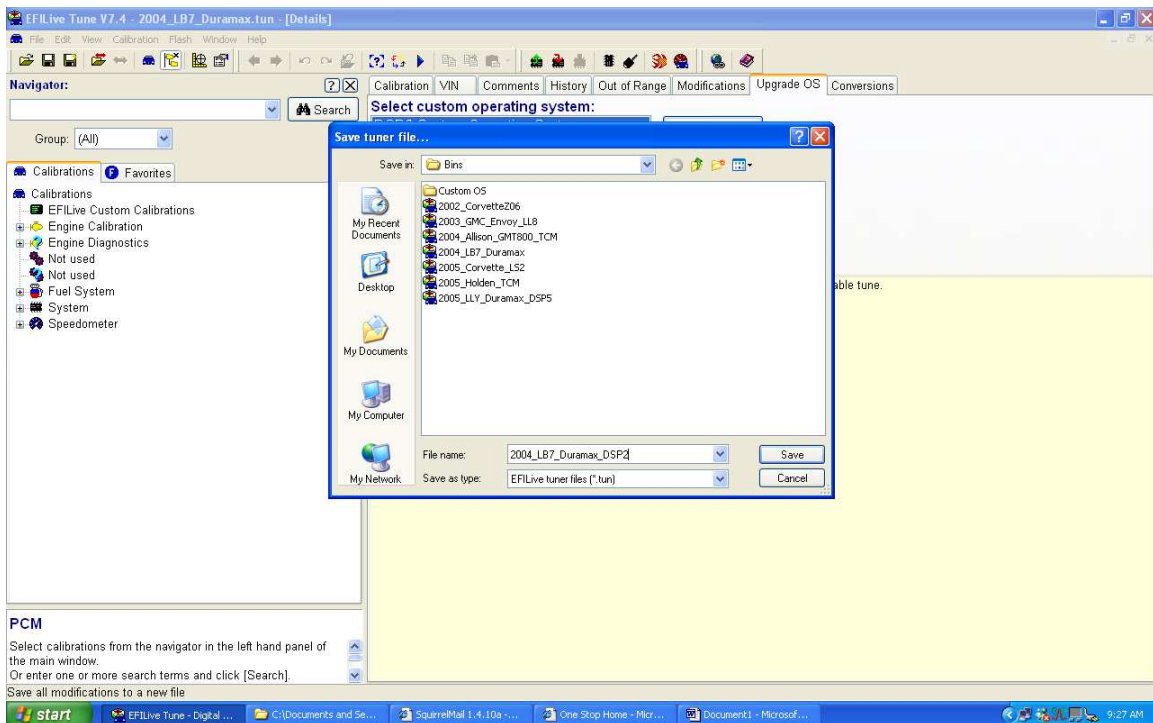
This is a basic tutorial on how to get started with DSP2 tunes. The captions for the graphics will be written underneath the graphics.



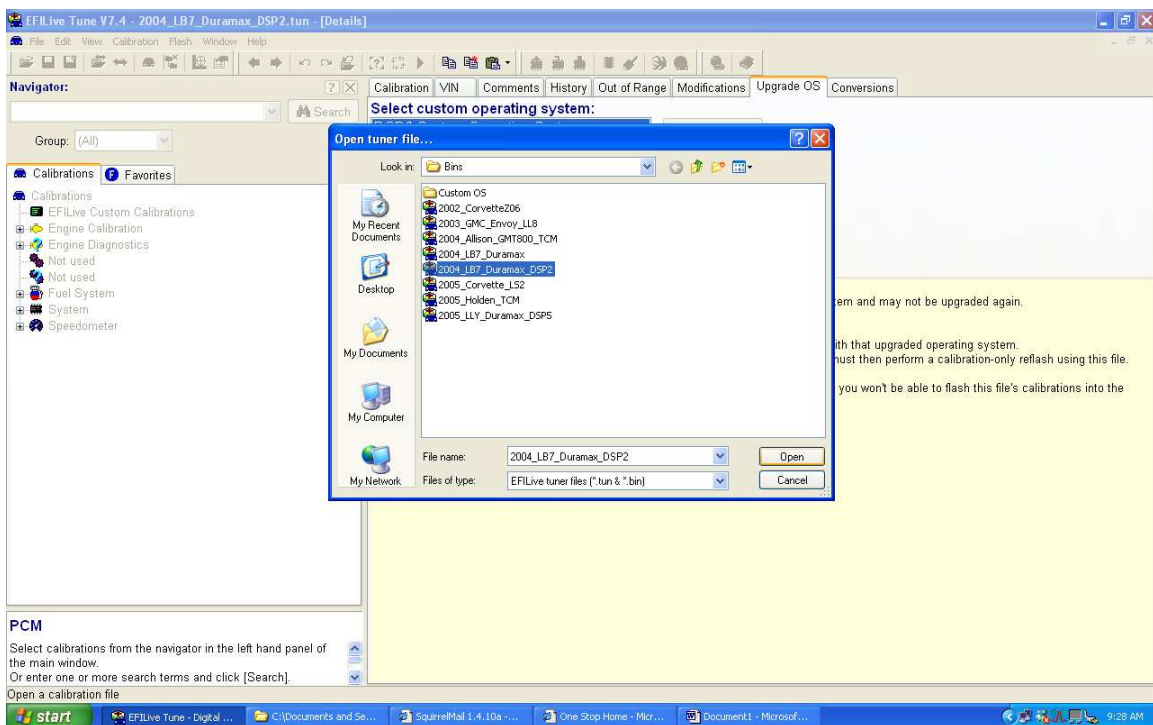
First, open the .tun file you want to apply the upgrade to; it must be an LLY or LB7 ECM for the upgrade to be available. Next, click on the tab that says “Upgrade O.S”. Click DSP2 custom operating system and then “Apply Upgrade”.



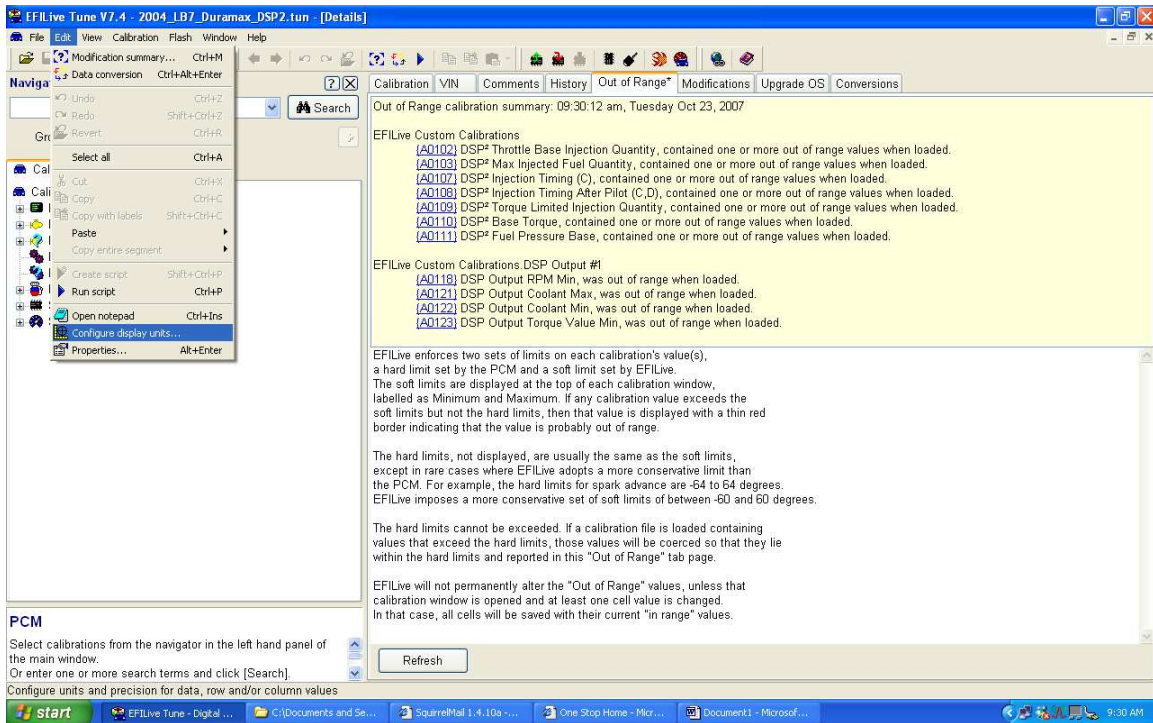
Click yes to confirm.



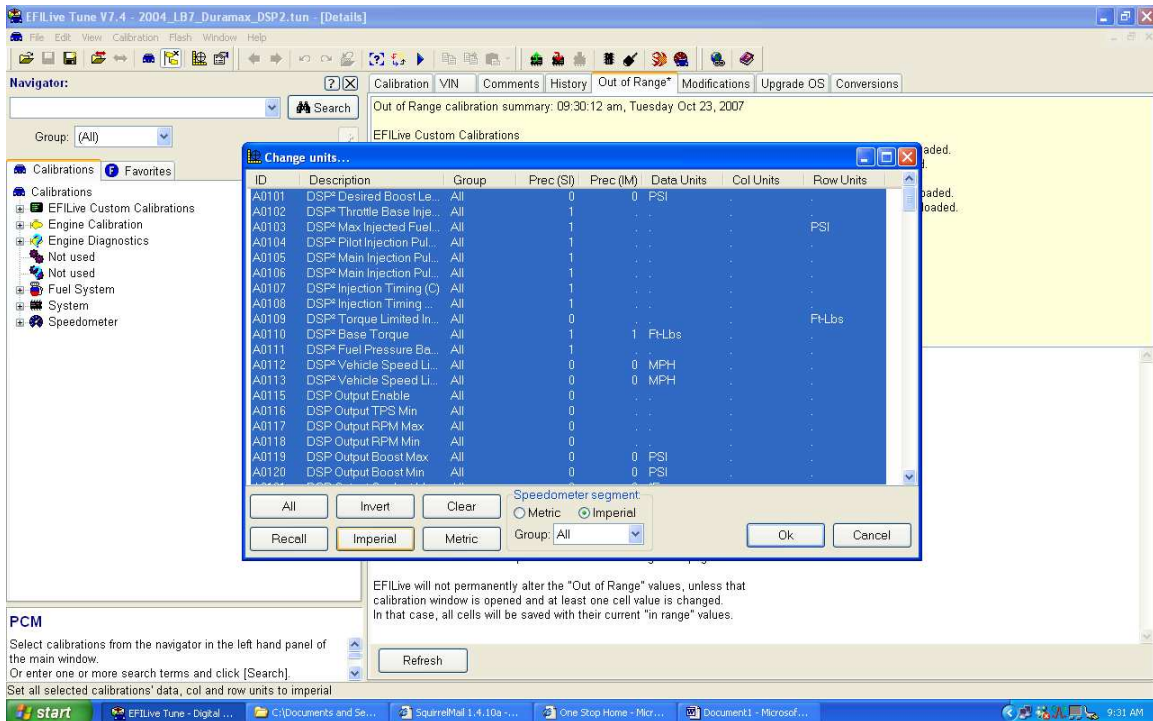
Then click the File drop down menu and “Save as”. Name it something you’ll recognize.



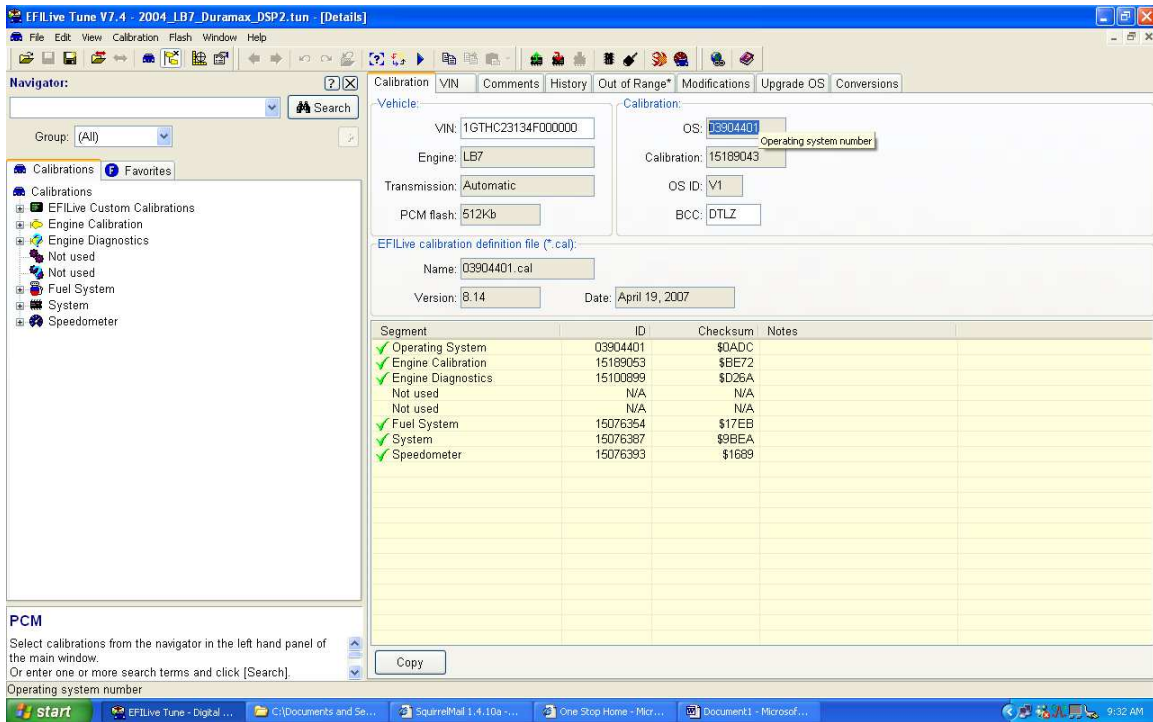
Next, click on the file dropdown and select open. Highlight your new DSP2 file and click ‘Open’. This is necessary; you won’t see your new calibration tables until you reopen the file.



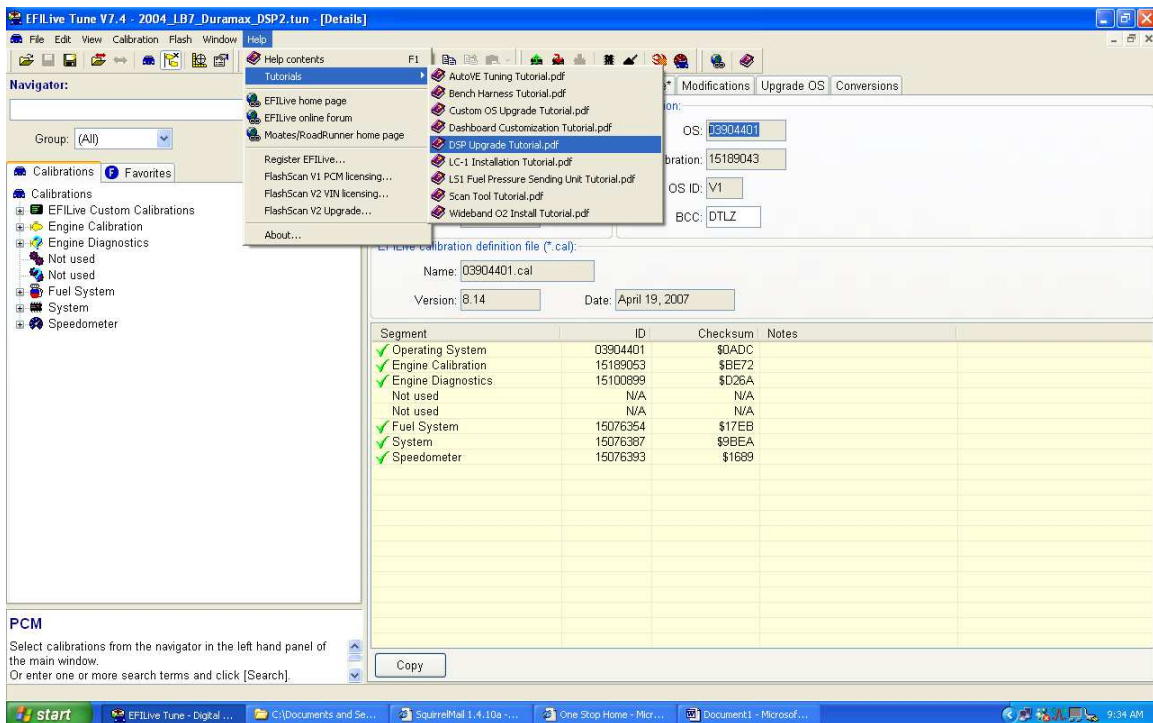
With your new file open, click on the edit dropdown and select configure display units.



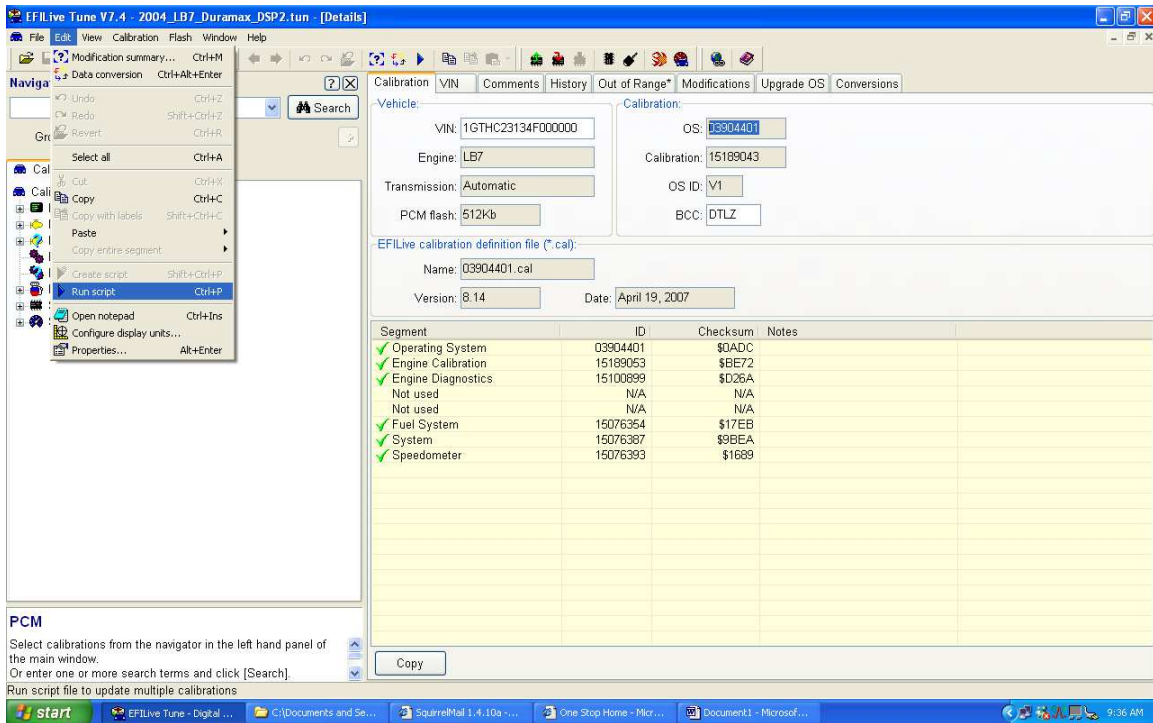
Click "All", then "Imperial", then "Ok".



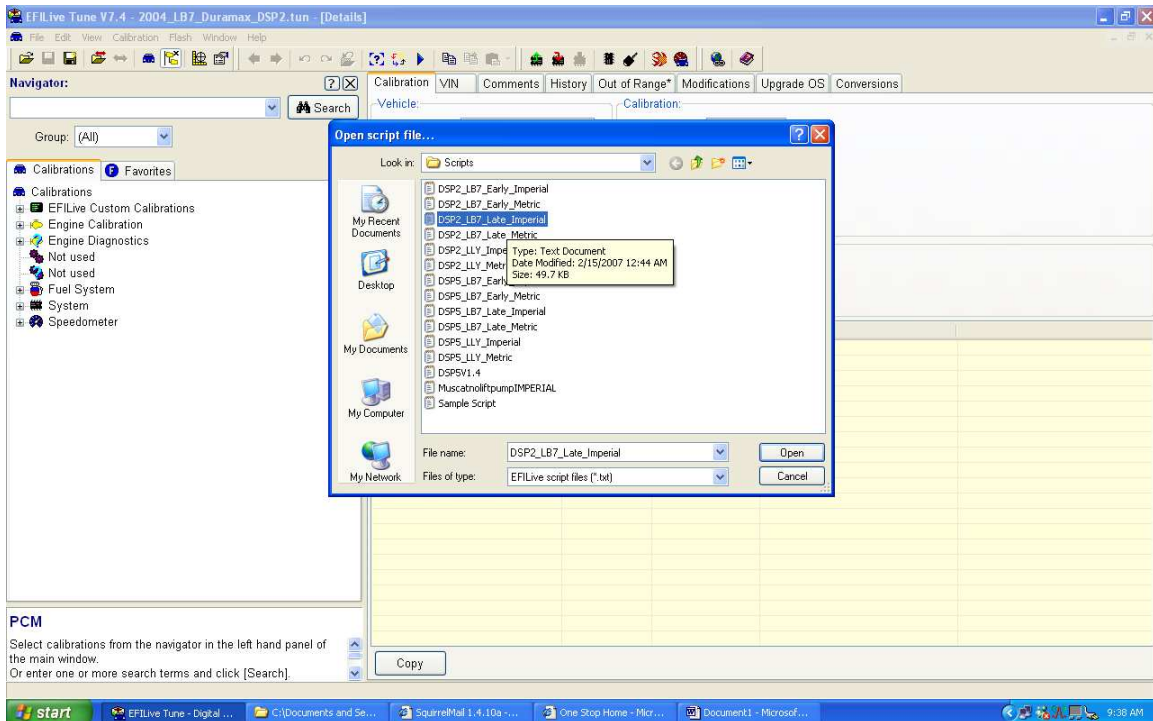
Next, click on the calibration tab to bring up which operating system we're working with. I've highlighted it for clarity. Make note of it so you know with script to run.



Go to page nine of the tutorial and find out which script corresponds to the O.S. of the tune you're working on. In our case, it's late LB7 and it's imperial because I made the whole calibration imperial.



To run a script, select the edit dropdown menu and select run script.



Select the appropriate script and press open.



