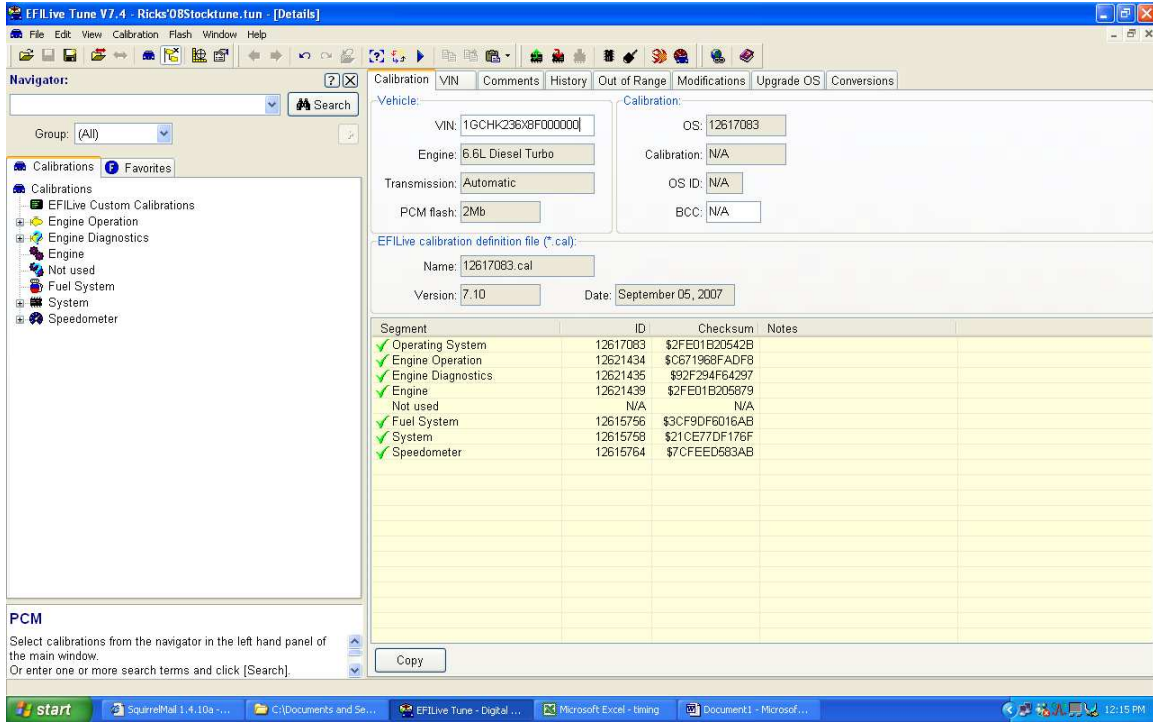
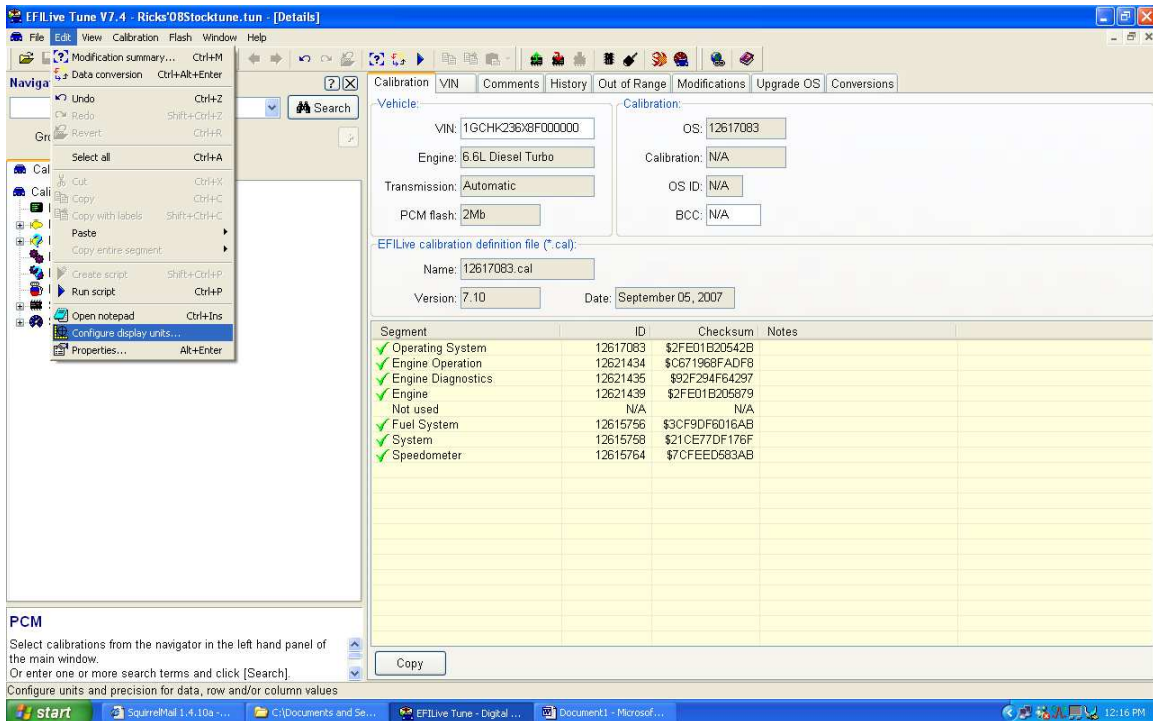


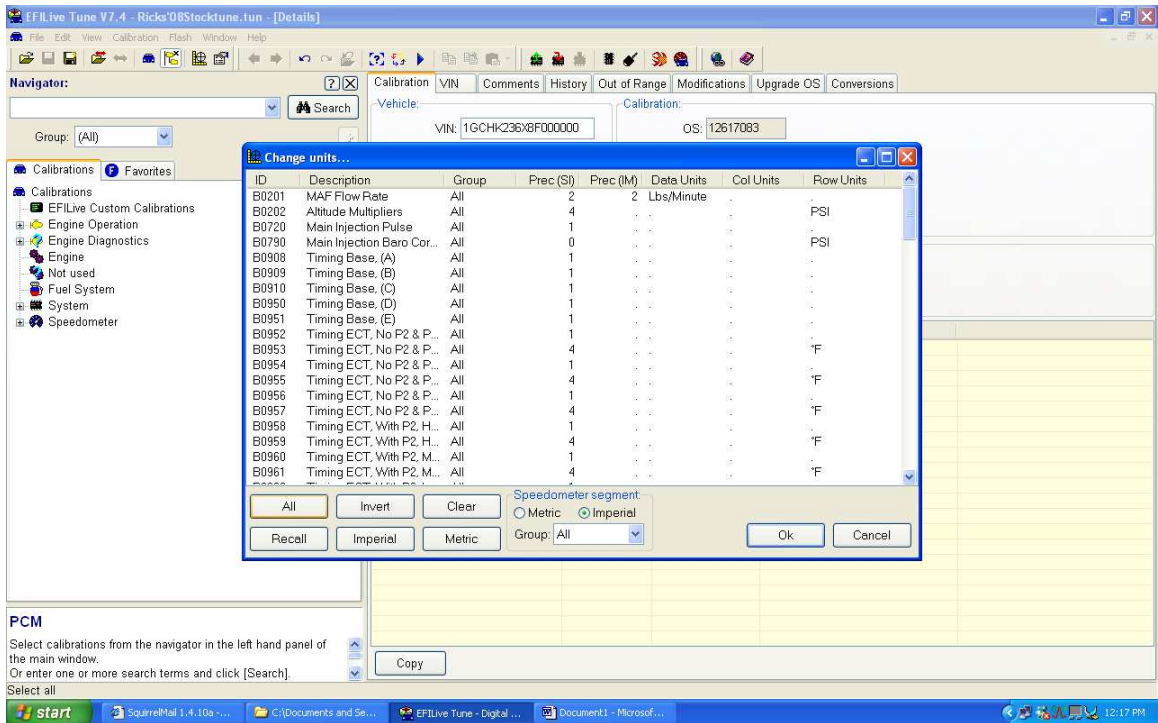
Scripts simplify the tuning process by only changing tables that were altered by the previous tuner. It uses your stock tune as the base and pastes the tables of the script into their respective locations. Captions will be under the graphics.



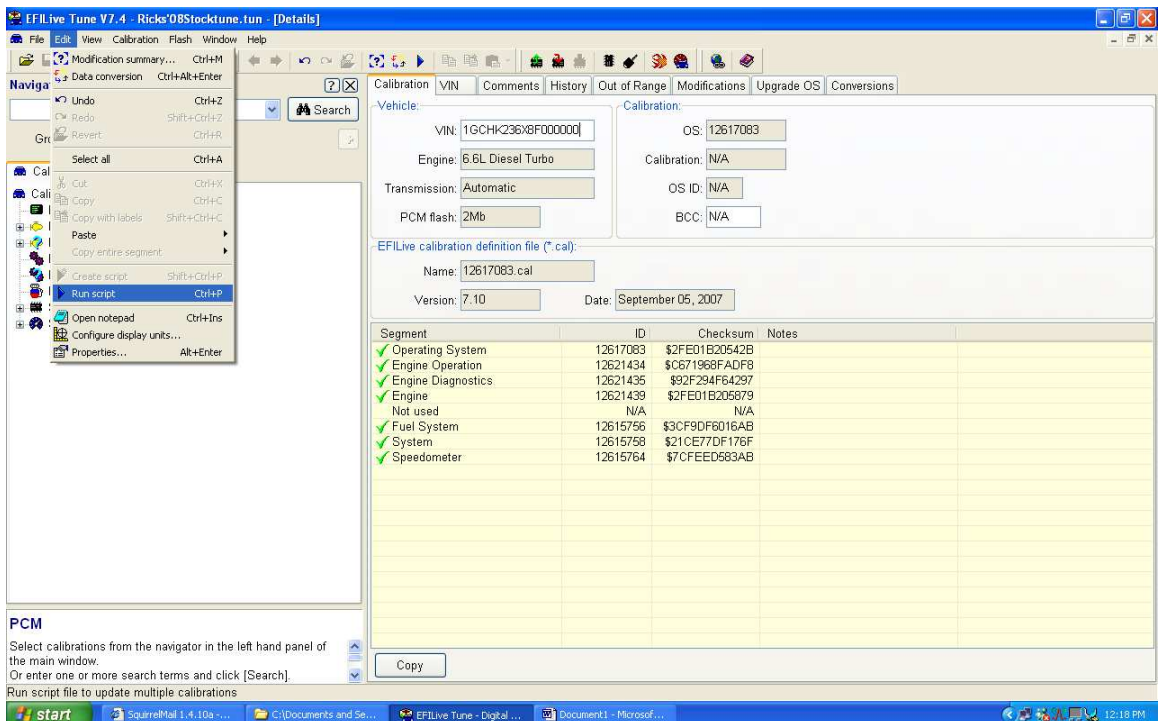
Open up the stock tune like this.



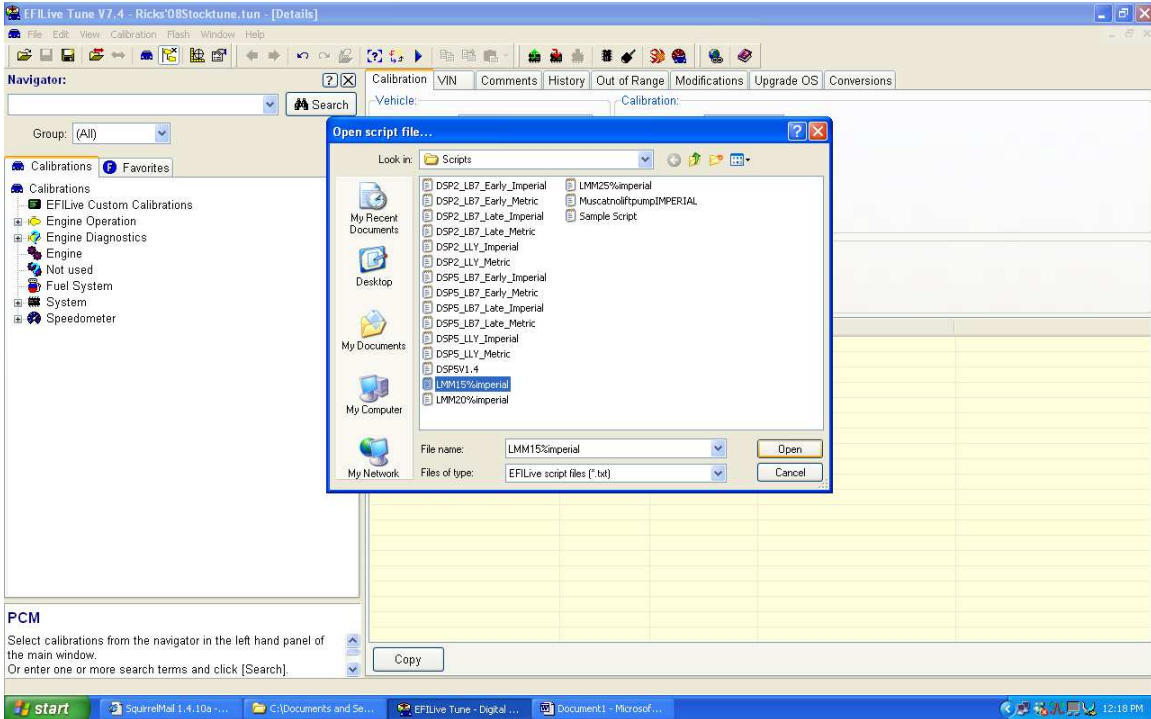
Select edit dropdown and configure display units.



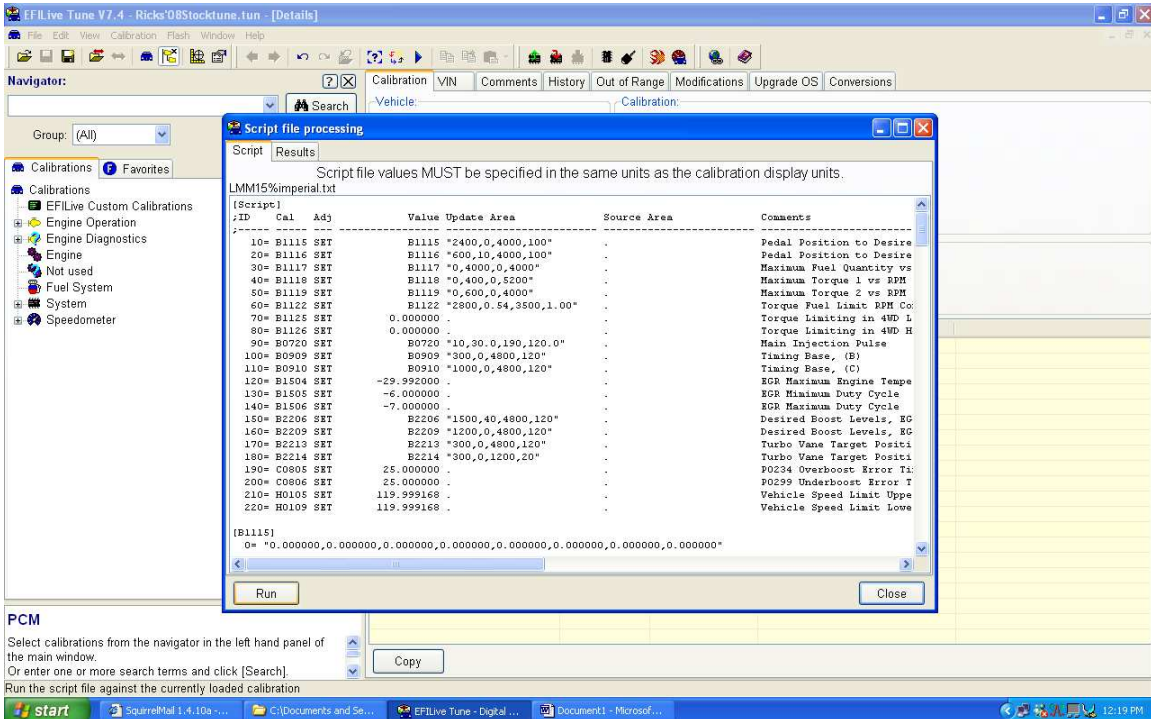
Select all, then imperial, then ok.



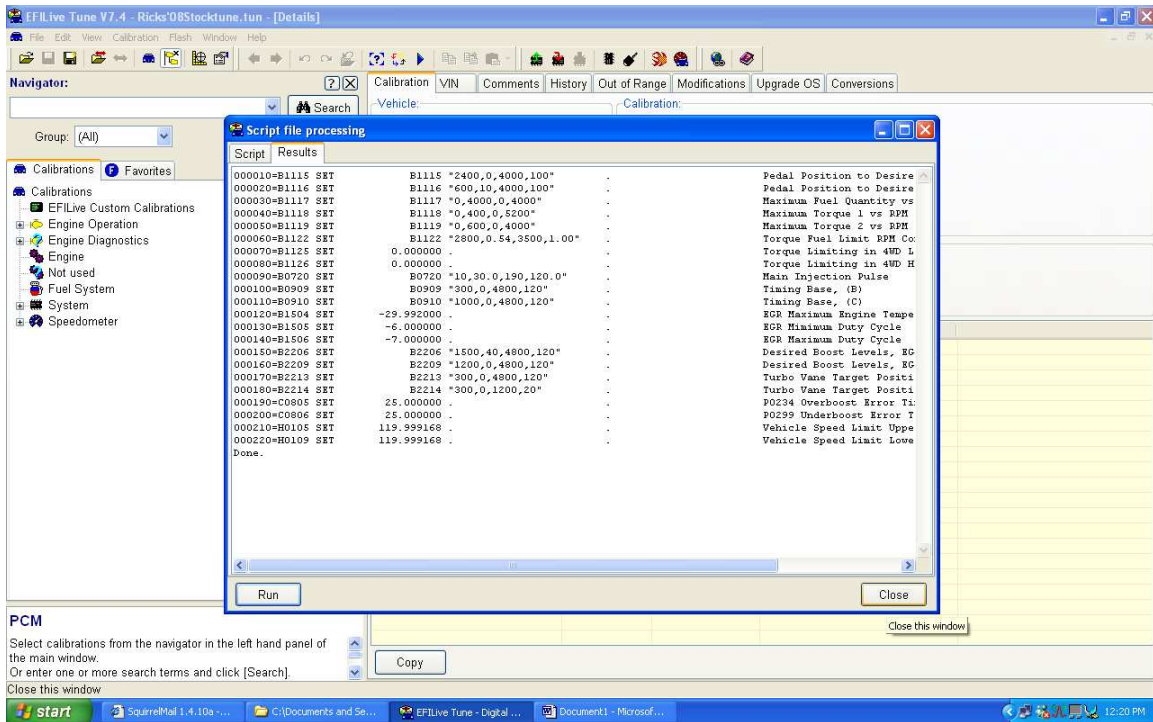
Next, select the edit dropdown menu again and select run script.



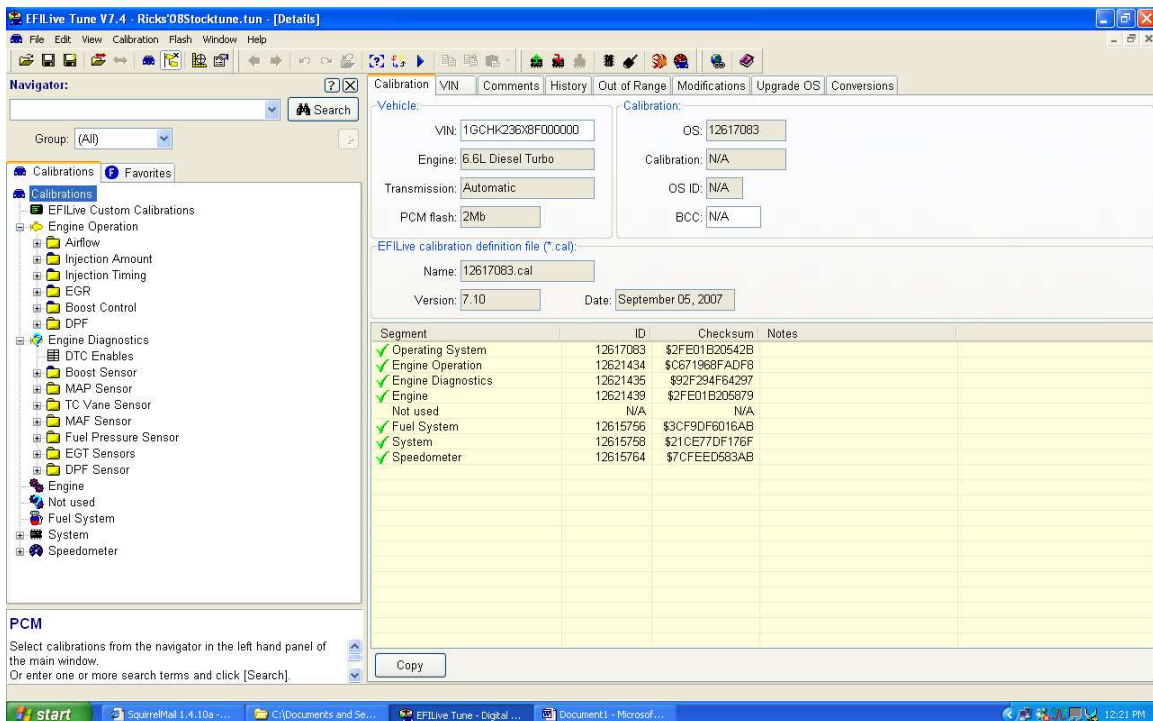
Select the script you want to run and click open. Your script will be wherever you downloaded it to. This means, be sure when you download it, you know where you put it.



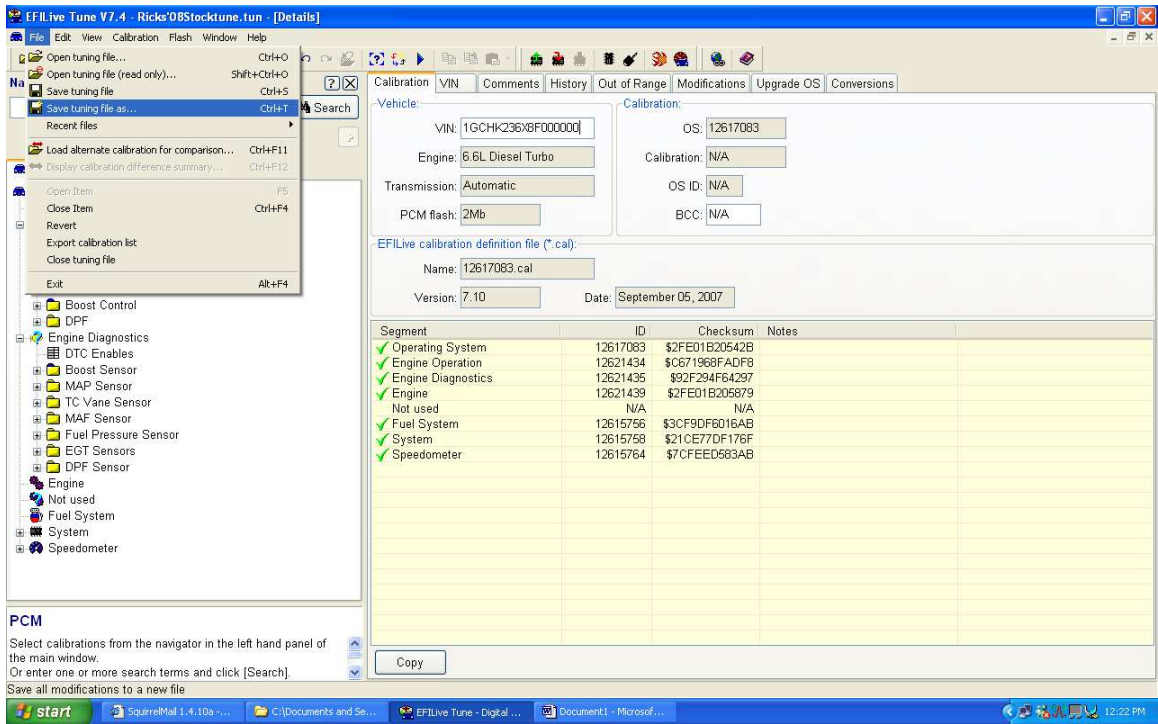
Next, click run.



After the script has run, you'll be able to see what was altered in the tune. Click close to leave this window.



Folders with blue tabs contain information that was altered from stock. Check it out if you like. Be sure to save this file under a descriptive name you'll remember.



Here's a quick picture of the "save as" function.